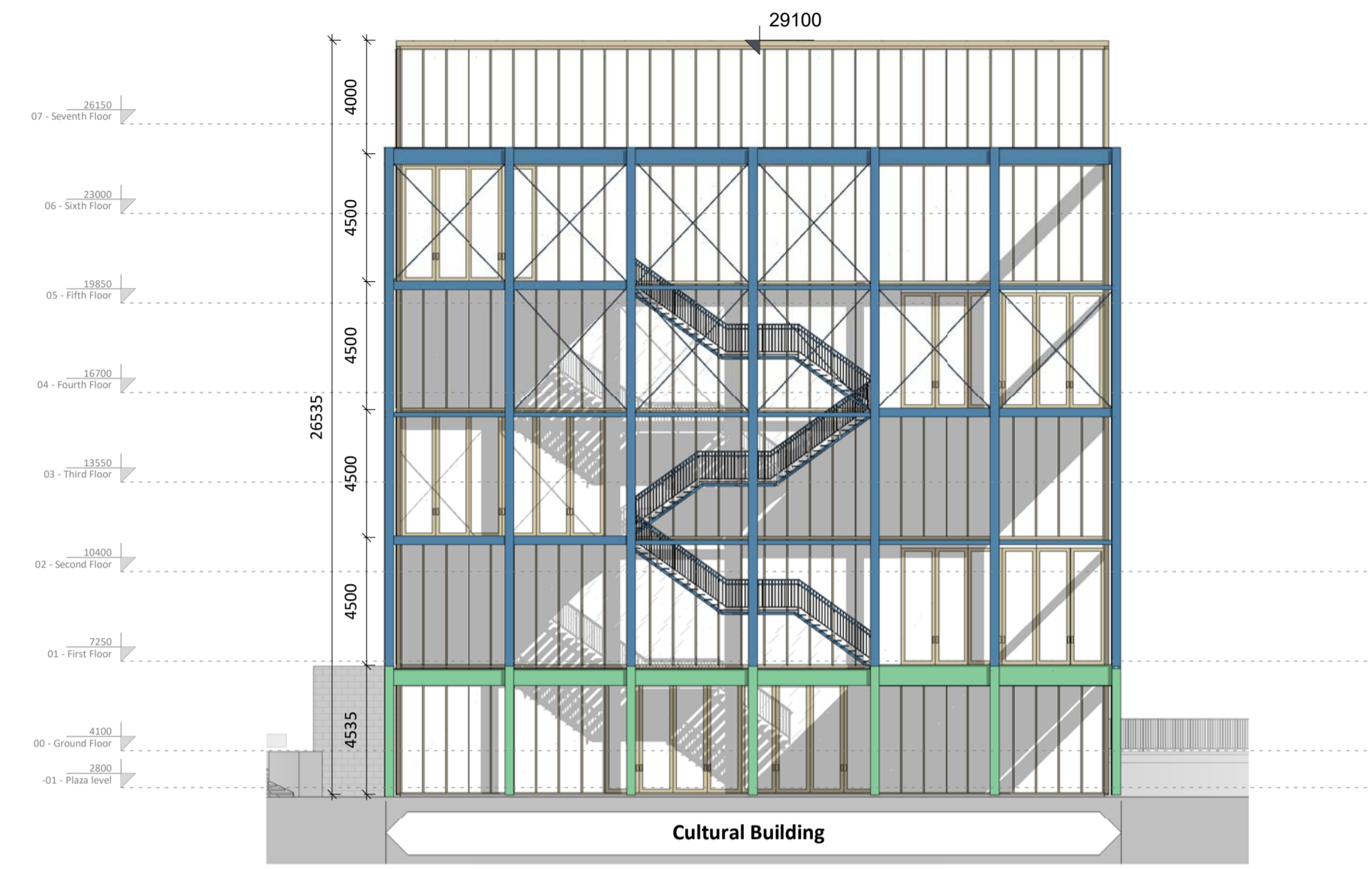
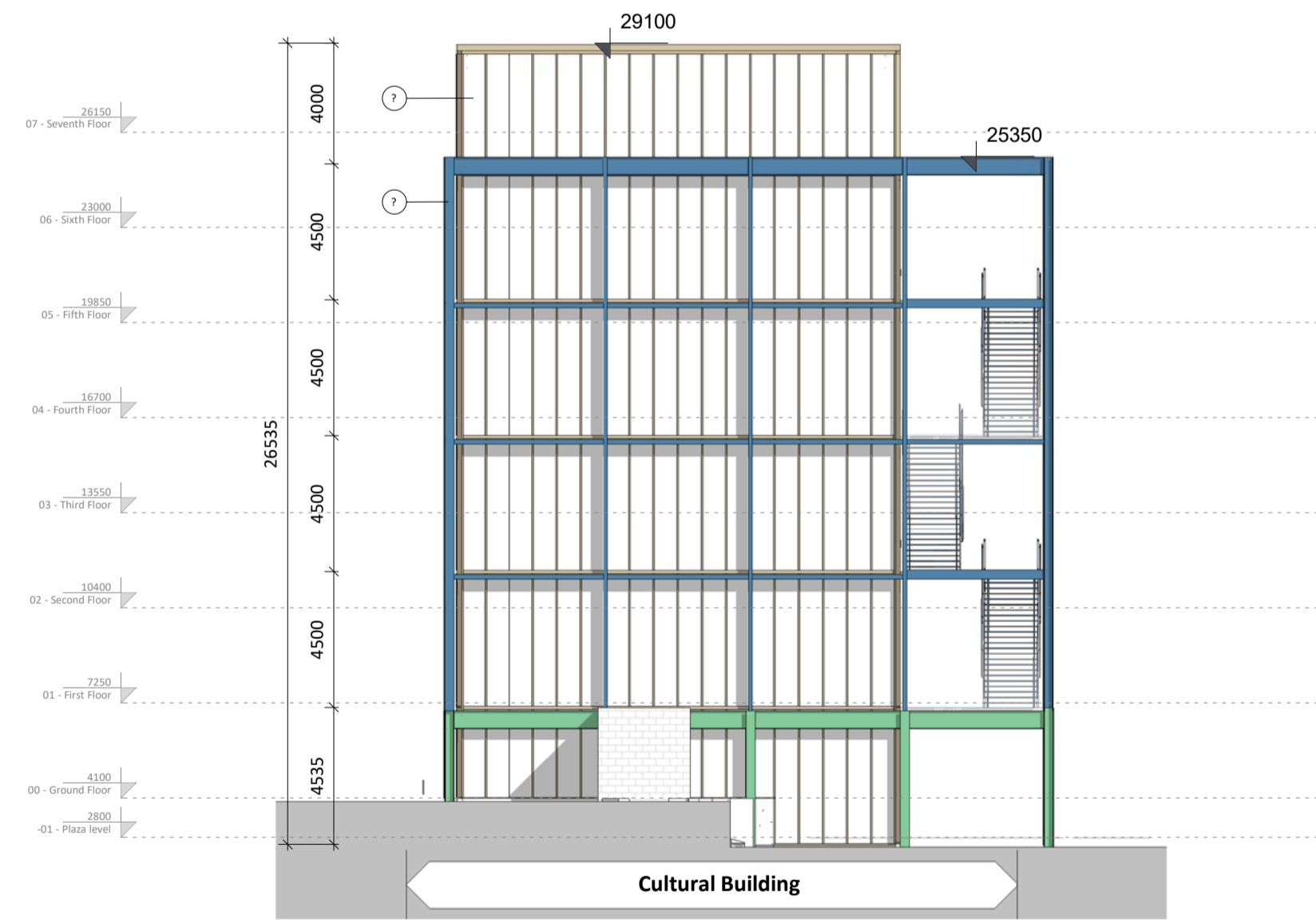




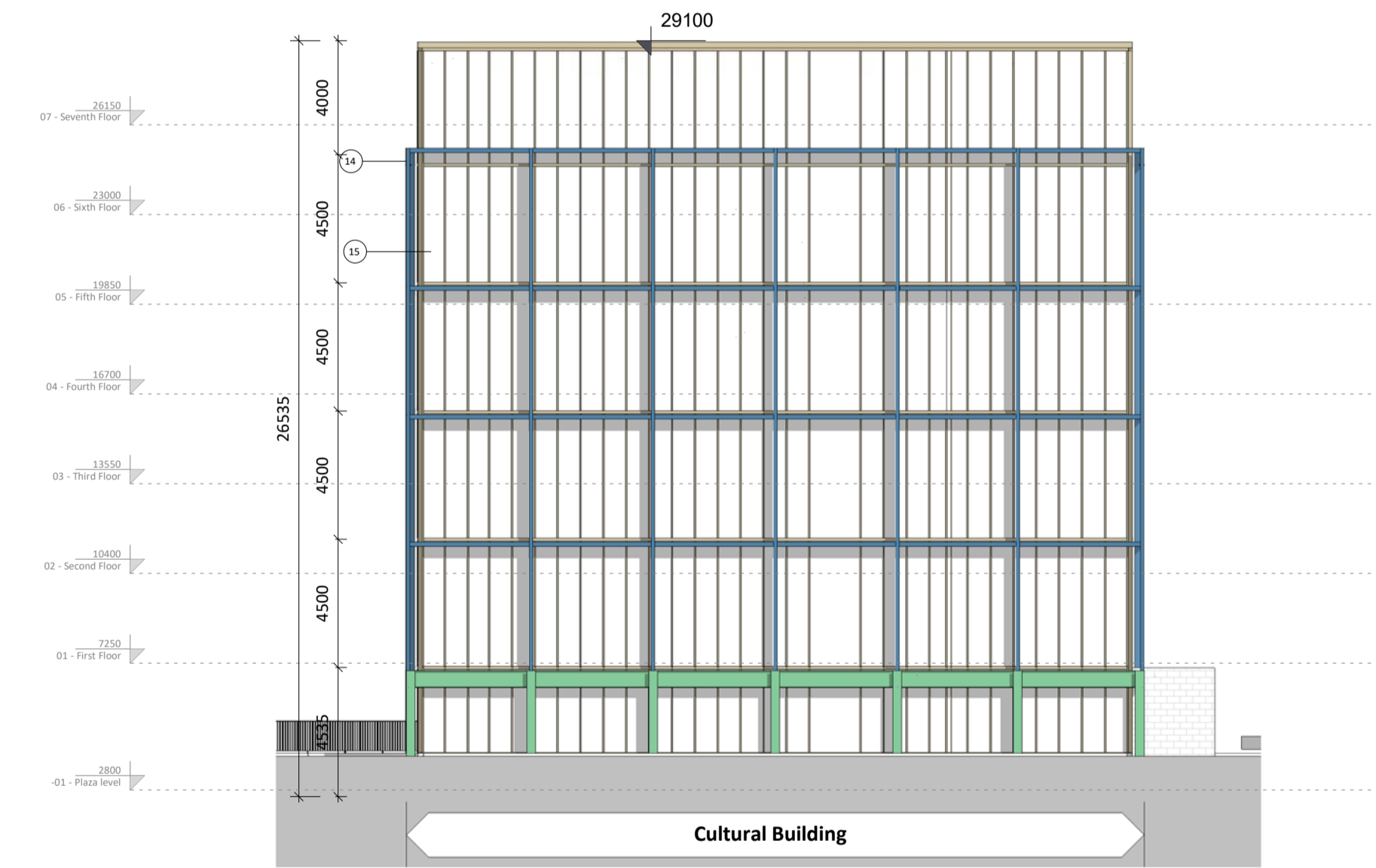
① Cultural Block - North
1 : 200



② Cultural Block - East
1 : 200



③ Cultural Block - South
1 : 200

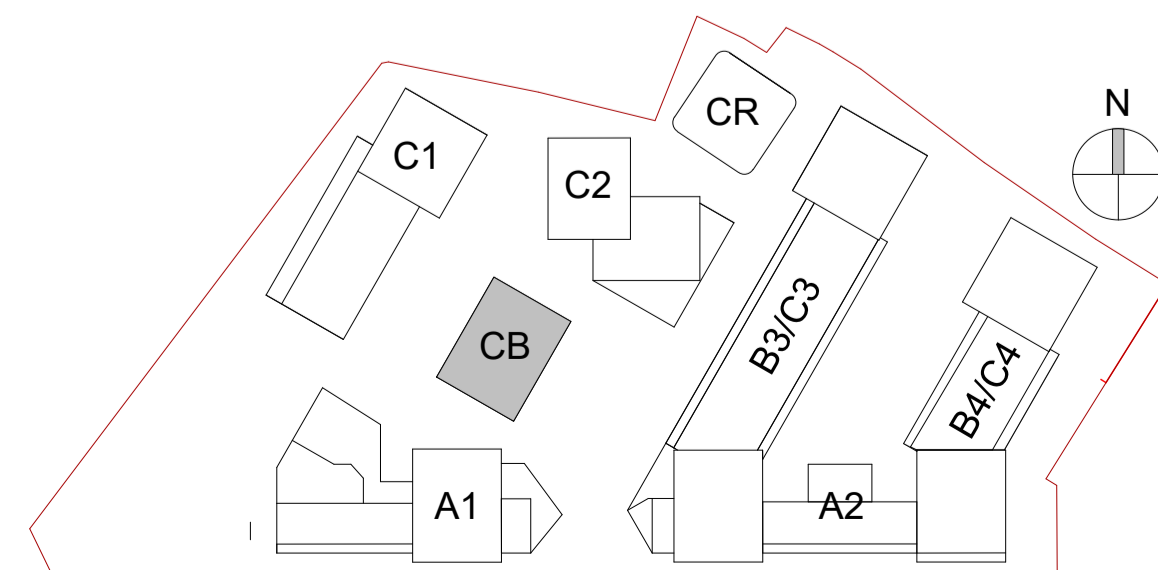


④ Cultural Block - West
1 : 200

MATERIAL TAG

- 1- Brick Type A
- 2- Brick Type B
- 3- Brick Type C
- 4- Brick Type D
- 5- Selected Render
- 6- Selected Aluminium Window System with Spandrel Panel
- 7- Mild Steel Balustrade
- 8- Metal (Gold)
- 9- Metal (Red)
- 10- Recon Stone Concrete (Grey)
- 11- Precast Concrete (Red)
- 12- Concrete
- 13- Timber Louver
- 14- Steel
- 15- Polycarbonate Panel
- 16- Render Gold

Cultural Block Elevations



Revision Description	Date	Rev. No.	Issued by
SHD Lodgment to ABP	01-12-20	1	JM

omahony pike

Project Code: 1826
Project Lead: JM
Scale @ A1: 1 : 200

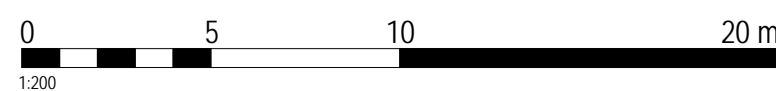
Drawn By: SW
Revision: 1
Date: 01-12-20

Job No.: 1826
Status: 50

Purpose: Planning

Project: Castleforbes SHD
Location: Castleforbes, Sheriff Street Upper, Dublin
Client: Glenveagh Living

Drawing Title: Cultural Block Elevations
Drawing No.: 1826-OMP-CB-ZZ-DR-A-2000



Figured dimensions only to be used. This drawing is copyright of O'Mahony Pike Architects Ltd. All information is shared as per approved use in accordance with ISO19650-2:2018, Table 5; Standard Codes for Suitability of Models and Documents and the BEP. If the 'Status' field is empty, this information has been shared at 50 - WIP.

Source file: 1826-OMP-ZZ-ZZ-03-A-0001.rvt